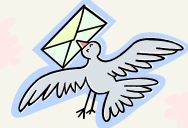


# The Mill City Messenger



CITY OF  
MILL CITY

## FIRST AVENUE BRIDGE CLOSURE INFORMATION

### FOR WATER AND SEWER EMERGENCIES CALL US **FIRST**

- Monday - Friday 8:00AM-5:00PM (503) 897-2302

### AFTER HOURS

- Public Works Supervisor  
Russ Foltz  
(503) 930-8256
- Public Works Maintenance  
Worker Jerry Curtis  
(503) 930-3887
- Public Works Maintenance  
Worker Jonathan deRenzo  
(503) 798-6507

### INSIDE THIS ISSUE:

Bridge Closure Traffic Control Plan (In Town)	2
Budget Closure Traffic Control Plan (Detour)	3
Contact Us	4
Bridge Closure Info, Cont'd	4
Mill City Planning Commission Vacancies	4

The Engineering Division of the Linn County Road Department has been working with the City of Mill City for the purpose of engineering design and construction of the Mill City Downtown Restoration and Revitalization Project. Federal funding (\$8,083,000) is provided for this project by the Federal Highway Administration (FHWA). Mill City is providing a match for this project in the amount of \$400,000. Linn County Road Department is providing a match of \$900,000. The project consists of three components: the Restoration and repair of the Historic Railroad Pedestrian Bridge, Restoration and Repair of the First Avenue Truss Bridge, and reconstruction and improvement of the downtown Broadway Street extending from First Avenue to 8th Avenue. The project provides an excellent opportunity to improve and revitalize Mill City. Both Mill City and Linn County are looking forward to the completion of the planned improvements.

The construction of the restoration and repair of the First Avenue Truss Bridge will occur first. This work includes cleaning and painting of the steel truss bridge, reconstruction of the sidewalk and pedestrian rail, and completion of improvements to and repair of the substructure of the bridge. The intent of this work is to provide an extended life for this bridge, improve its structural capacity, and improve its safety. The bridge

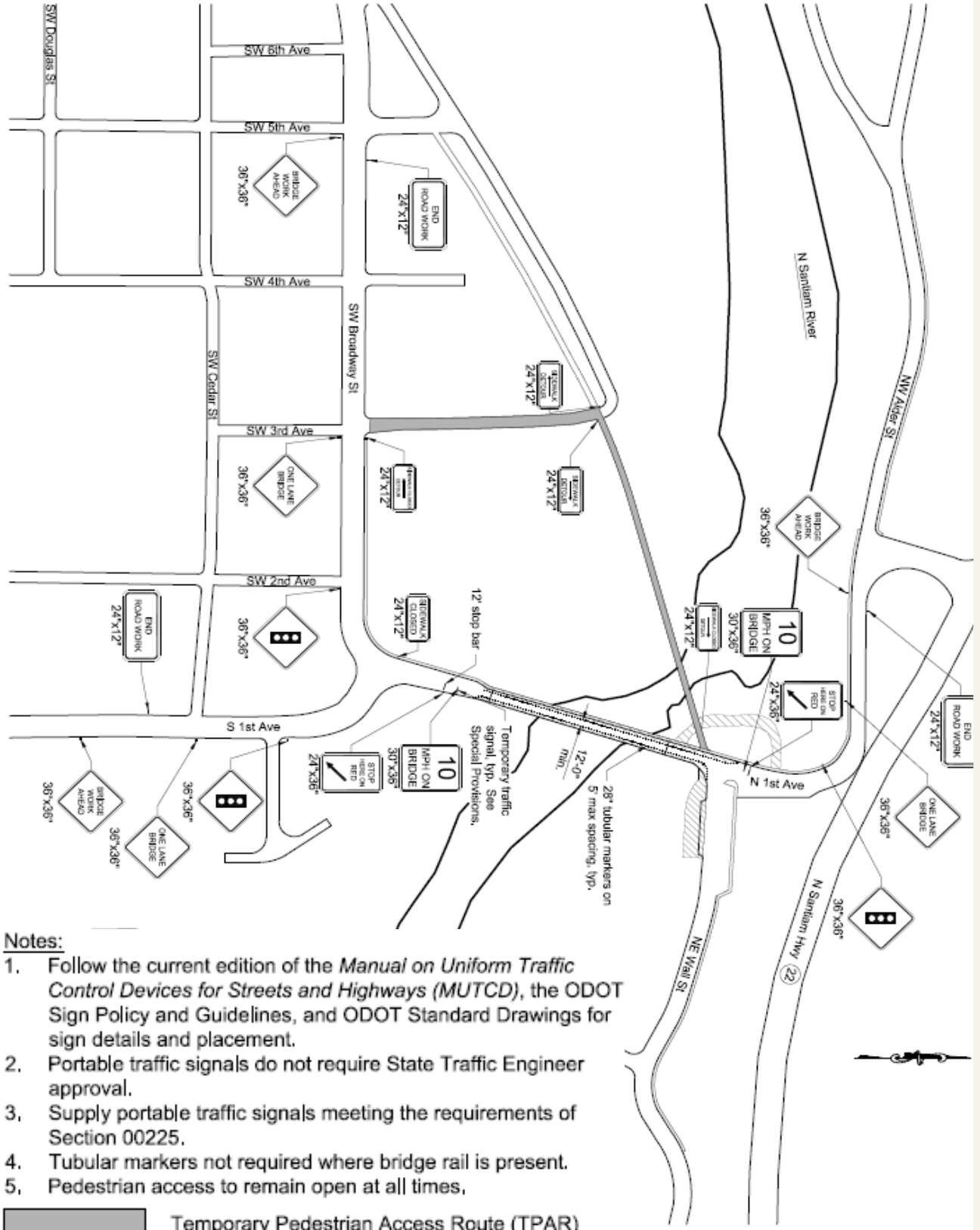
presently has capacity to support all legal truck load configurations under 50 tons total weight. Some weight restrictions apply to truck configurations in excess of 50 tons total weight.

The cleaning of the bridge will include and require providing complete containment since the paint on the bridge contains lead. The lead presents a potential health hazard to the public as well as to the environment and the pristine waters of the North Santiam River which provides habitat for salmon and steelhead. Due to the narrow width and configuration of the bridge, the bridge will need to be closed when containment is in place. It will also need to be closed when repairs to the substructure will be completed since parts of the bridge will needed be temporarily supported during that time.

Presently, it is planned to have this bridge closed to traffic from June 15, 2020 to September 4, 2020. It is hopeful that this closure may be shorter than that. However, this will not be known until the project is bid, the contractor is selected, and a final construction schedule is planned. This will be able to better define if the bridge may be closed for a shorter period of time in early May 2020.

Part of the planning for this closure has been notifying and working with the Mill City Fire Department. The Linn County Engineer, Chuck Knoll, and the Fire Chief of the Mill City Fire Department, have been

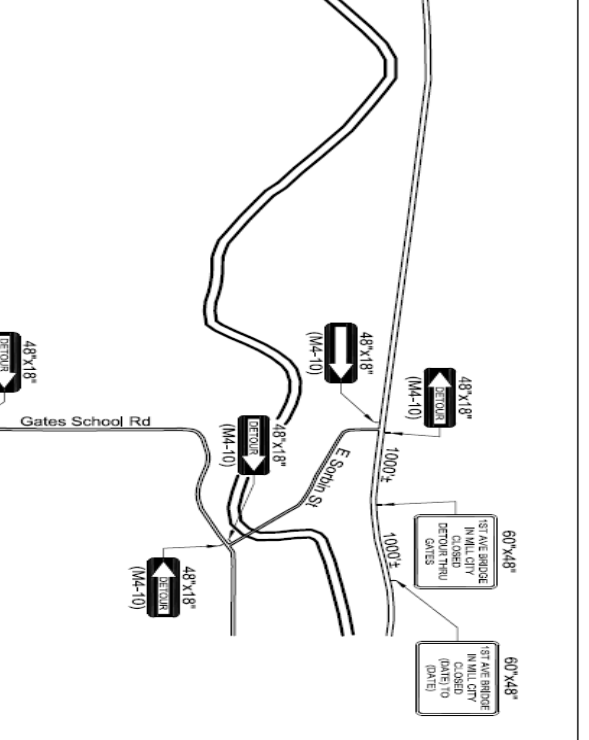
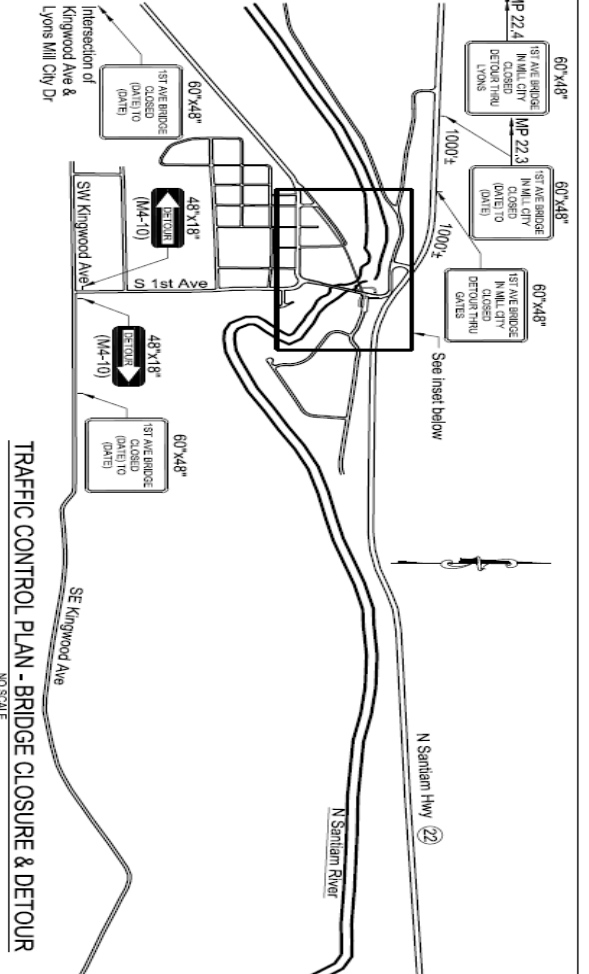
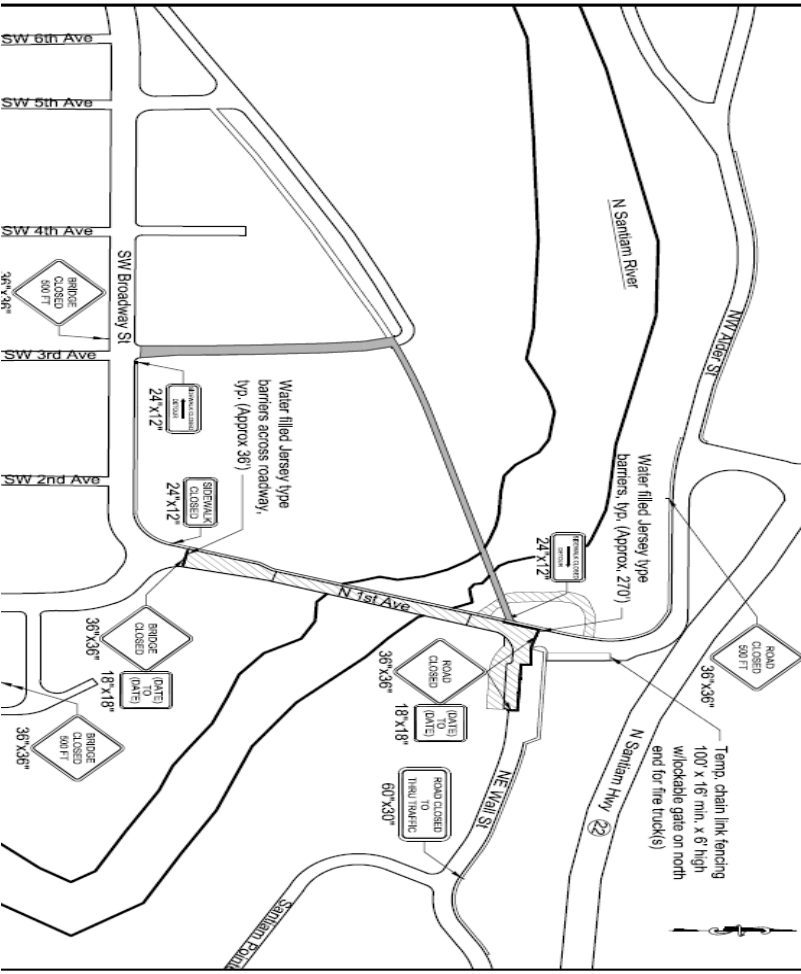
TRAFFIC CONTROL PLAN - ONE LANE OPEN ACROSS BRIDGE



Notes:

1. Follow the current edition of the *Manual on Uniform Traffic Control Devices for Streets and Highways (MUTCD)*, the ODOT Sign Policy and Guidelines, and ODOT Standard Drawings for sign details and placement.
2. Portable traffic signals do not require State Traffic Engineer approval.
3. Supply portable traffic signals meeting the requirements of Section 00225.
4. Tubular markers not required where bridge rail is present.
5. Pedestrian access to remain open at all times.

	Temporary Pedestrian Access Route (TPAR)
	Construction/Staging Area



- Notes:
1. Follow the current edition of the *Manual on Uniform Traffic Control Devices for Streets and Highways (MUTCD)*, the *ODOT Sign Policy and Guidelines*, and *ODOT Standard Drawings* for sign details and placement.
  2. Portable traffic signals do not require State Traffic Engineer approval.
  3. Supply portable traffic signals meeting the requirements of Section 00225.
  4. Tubular markers not required where bridge rail is present.
  5. Pedestrian access to remain open at all times.
- Temporary Pedestrian Access Route (TPAR)
  - Construction/Slaging Area
- Water Filled Jersey Barriers:  
Place water filled Jersey Type barricades full width of the road. Barriers to be located as shown. Barriers to include a minimum of 2 flashing warning lights at each end of the bridge. "Road Closed" signs to be placed on front of barriers. Barriers shall meet the MUTCD.





**CITY OF  
MILL CITY**

444 S 1st Avenue  
PO Box 256  
Mill City, OR 97360

Phone: 503-897-2302

Fax: 503-897-3499

E-mail: [millcity@ci.mill-city.or.us](mailto:millcity@ci.mill-city.or.us)

Website: [www.ci.mill-city.or.us](http://www.ci.mill-city.or.us)

Facebook: City of Mill City, Oregon

Twitter: @MillCityOR

**OFFICE HOURS: M-F 8AM TO 5PM**

**COUNCIL MEETINGS, SECOND AND FOURTH  
TUESDAY OF EACH MONTH, 6:30PM**

**PLANNING MEETINGS, THIRD FRIDAY OF  
EACH MONTH, 9:00AM—HEARINGS; THIRD  
TUESDAY OF EACH MONTH, 6:30PM**

**Contacts**

<b>City Recorder</b> Stacie Cook	<a href="mailto:scook@ci.mill-city.or.us">scook@ci.mill-city.or.us</a>
<b>Finance Clerk</b> Vicki Emery	<a href="mailto:vemery@ci.mill-city.or.us">vemery@ci.mill-city.or.us</a>
<b>UB/Court</b> Kimberley Johnson	<a href="mailto:kjohnson@ci.mill-city.or.us">kjohnson@ci.mill-city.or.us</a>
<b>City Clerk/Reid House Facilitator</b> Tree Fredrickson	<a href="mailto:tfredrickson@ci.mill-city.or.us">tfredrickson@ci.mill-city.or.us</a>
<b>Public Works Supervisor</b> Russ Foltz	<a href="mailto:rfoltz@ci.mill-city.or.us">rfoltz@ci.mill-city.or.us</a>

**Mayor & Council**

<b>Tim Kirsch, Mayor</b>	<a href="mailto:tkirsch@ci.mill-city.or.us">tkirsch@ci.mill-city.or.us</a>	<b>Brett N. Katlong, Water &amp; Sanitation Commissioner</b>	<a href="mailto:bkatlong@ci.mill-city.or.us">bkatlong@ci.mill-city.or.us</a>
<b>Dawn Plotts, Police Commissioner</b>	<a href="mailto:dplotts@ci.mill-city.or.us">dplotts@ci.mill-city.or.us</a>	<b>Janet L. Zeyen-Hall, Parks Commissioner</b>	<a href="mailto:jzeyen-hall@ci.mill-city.or.us">jzeyen-hall@ci.mill-city.or.us</a>
<b>Tony L. Trout Street Commissioner</b>	<a href="mailto:ttrout@ci.mill-city.or.us">ttrout@ci.mill-city.or.us</a>	<b>Steven A. Winn, Building Commissioner</b>	<a href="mailto:swinn@ci.mill-city.or.us">swinn@ci.mill-city.or.us</a>

**BRIDGE CLOSURE  
CONTINUED FROM PAGE 1**

working together so as to provide a location for parking of Fire and Emergency Response equipment on the north side of the North Santiam River. The members of the fire department will be able to access the equipment by way of the Railroad Pedestrian Bridge when the First Avenue Bridge is closed.

Arrangements have also been made by the Mill City Fire Department with the Gates Fire Department. The Gates Fire Department is located next to Highway 22 and is located only three miles from Mill City. Therefore, this arrangement and the close proximity of the Gates Fire Department provides a quick emergency response. We are fortunate to

have two well equipped and well trained and staffed fire districts located in close proximity of each other and working in coordination for this planned bridge closure. Linn County will be working with the contractor during construction with the intent to minimize the length of time for the bridge closure and will also keep the Fire Departments informed of the status of the closure as construction is completed.

**PLANNING  
COMMISSION  
VACANCIES**

The City of Mill City three (3) vacancies on the Mill City Planning Commission, as of June 30, 2020. Interested residents must submit an application outlining their interest in the position by

May 15, 2020.

The basic eligibility requirement is residence within the City limits or within two (2) miles of City limits. The Planning Commission meets once per month on the 3rd Friday of the month at 9:00a.m. In the case of a public hearing the meetings are changed to the third Tuesday of the month at 6:30p.m. Meetings are held at City Hall; 444 S 1st Avenue. Additional work sessions are scheduled as needed. The Planning Commission reviews all land use applications and development proposals. They also consider amendments and updates to the city's zoning ordinance and comprehensive plan. Applications are available at City Hall or on our website: [www.ci.mill-city.or.us](http://www.ci.mill-city.or.us).

Applications should be addressed to:  
Stacie Cook, MMC, City Recorder  
City of Mill City

P. O. Box 256, Mill City, OR 97360

Questions may be directed to City Recorder Stacie Cook, MMC at (503) 897-2302.